

---

# Project funding opportunities for HKU students and staff



**COMMONCORE**  
THE UNIVERSITY OF HONG KONG

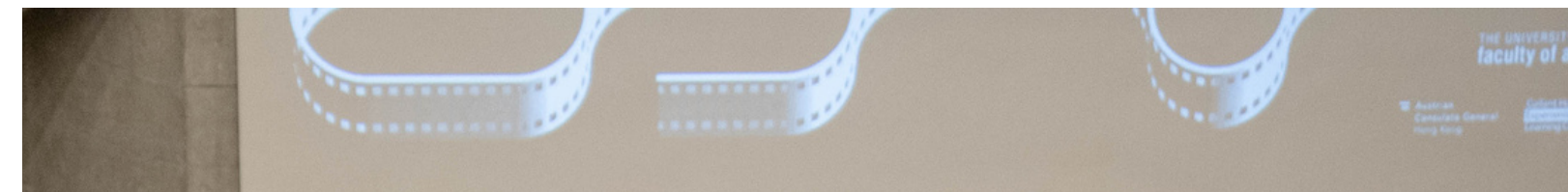
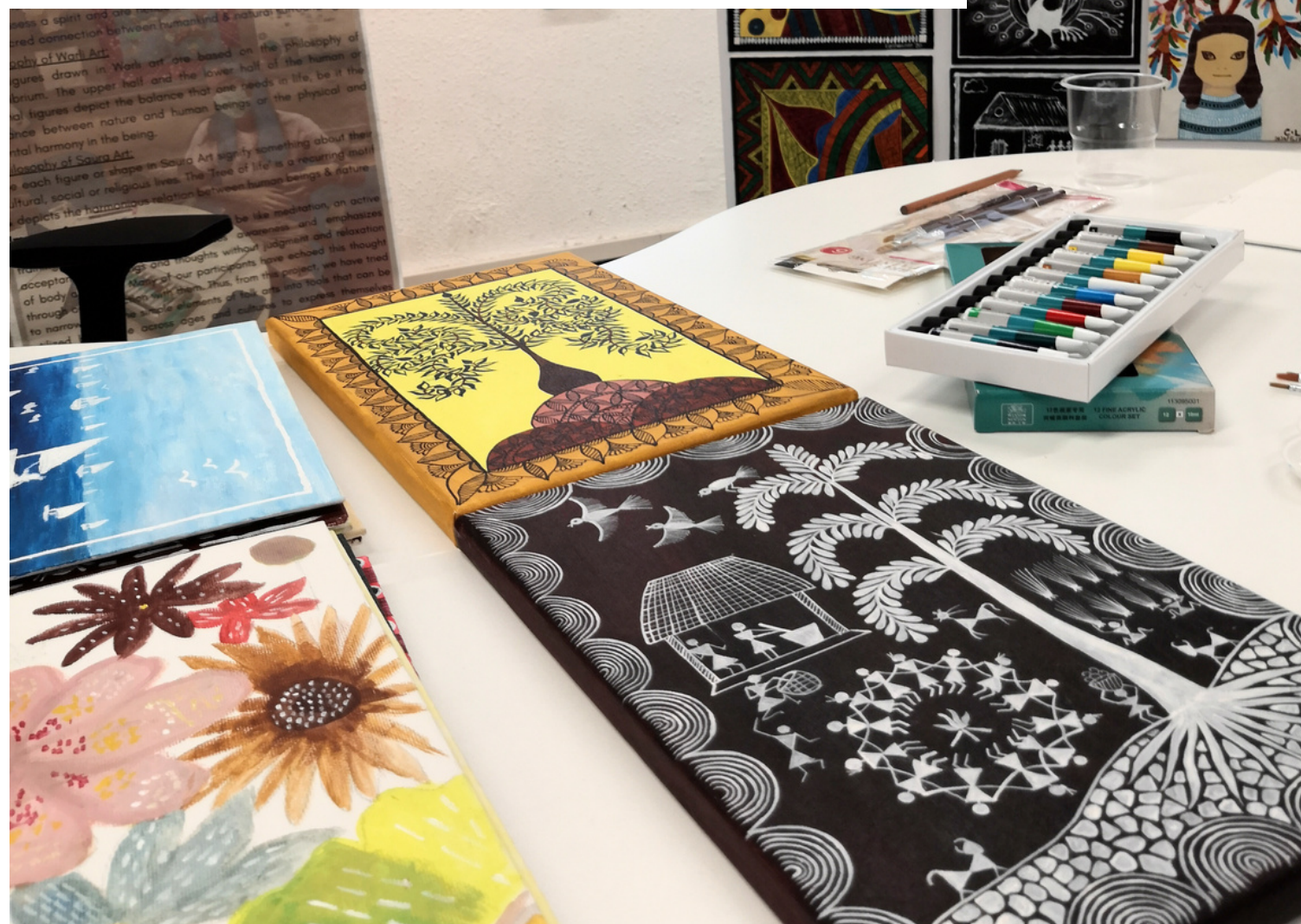
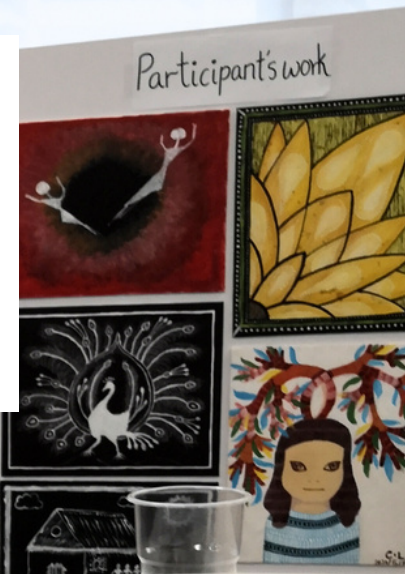




# Transdisciplinary/ Interdisciplinary Projects



## 1) Undergraduate Research Fund



## 2) Experiential Learning Fund





# Funding Conditions for both options

- On reimbursement basis.
- Funding can be used for local, mainland or international travel and accommodation for student directly related to the project.
- Grant **per student**: Local (Hong Kong) \$2,000, Mainland and other Asian Regions: \$2,000. Outside Asia: \$5,000
- For mainland projects, possibility to request additional funding up to \$5,000 per student.



# Transdisciplinary Undergraduate Research

- Funding for undergraduate students to start a research project.
- Develop students' research skills.
- Work individually or collaborate with a small group of peers.
- Topic can be anything of interest.
- At least 6 weeks to year-long projects.





# Who can apply?

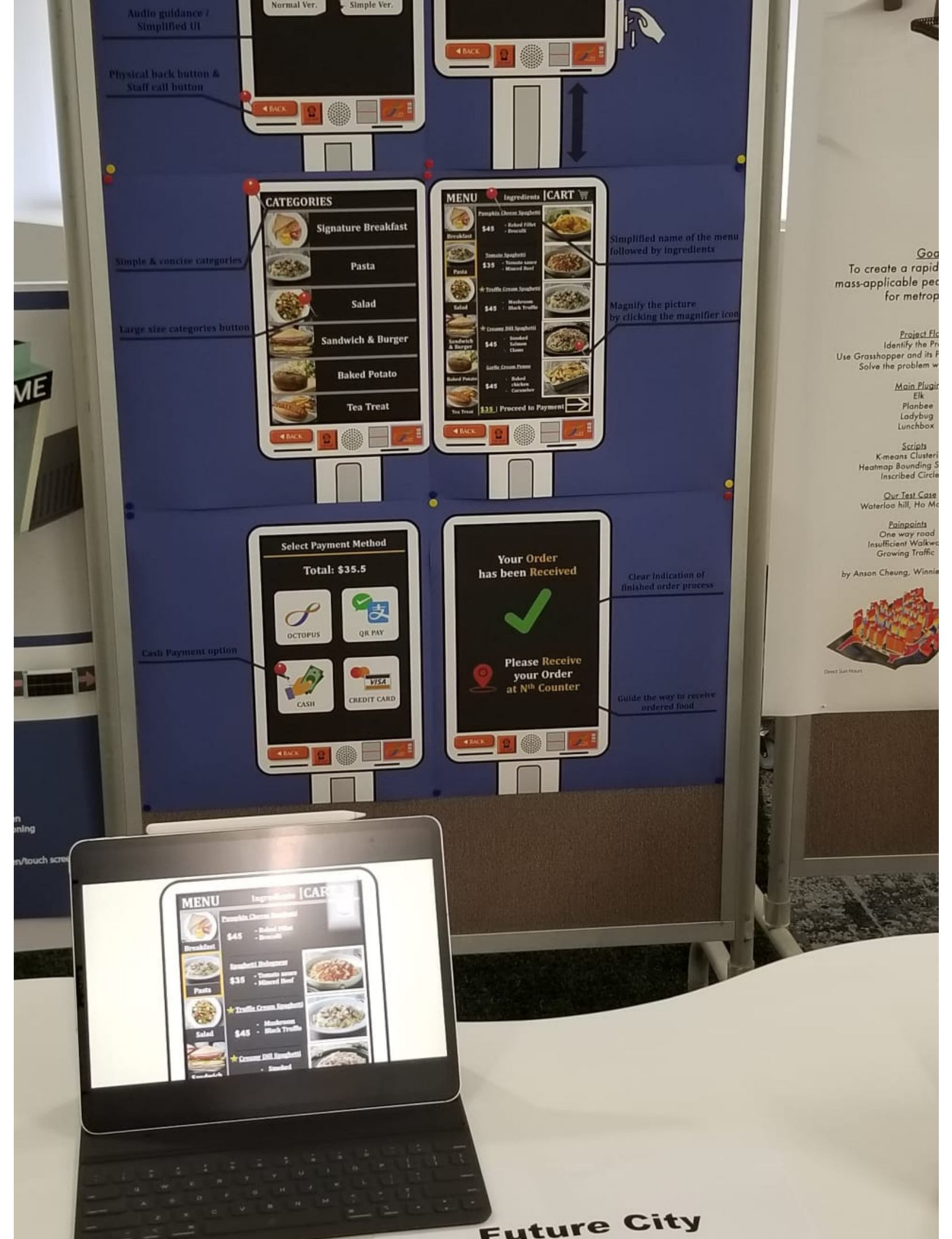
- Undergraduate students individually or in teams.
- Requires support of a Faculty mentor.





# Why do I want to get involved?

- Gain experience supervising undergraduate student
- Student assistance in your current research projects
- Quick funding to cover incidentals
- Potential to co-publish with students





# Important Criteria

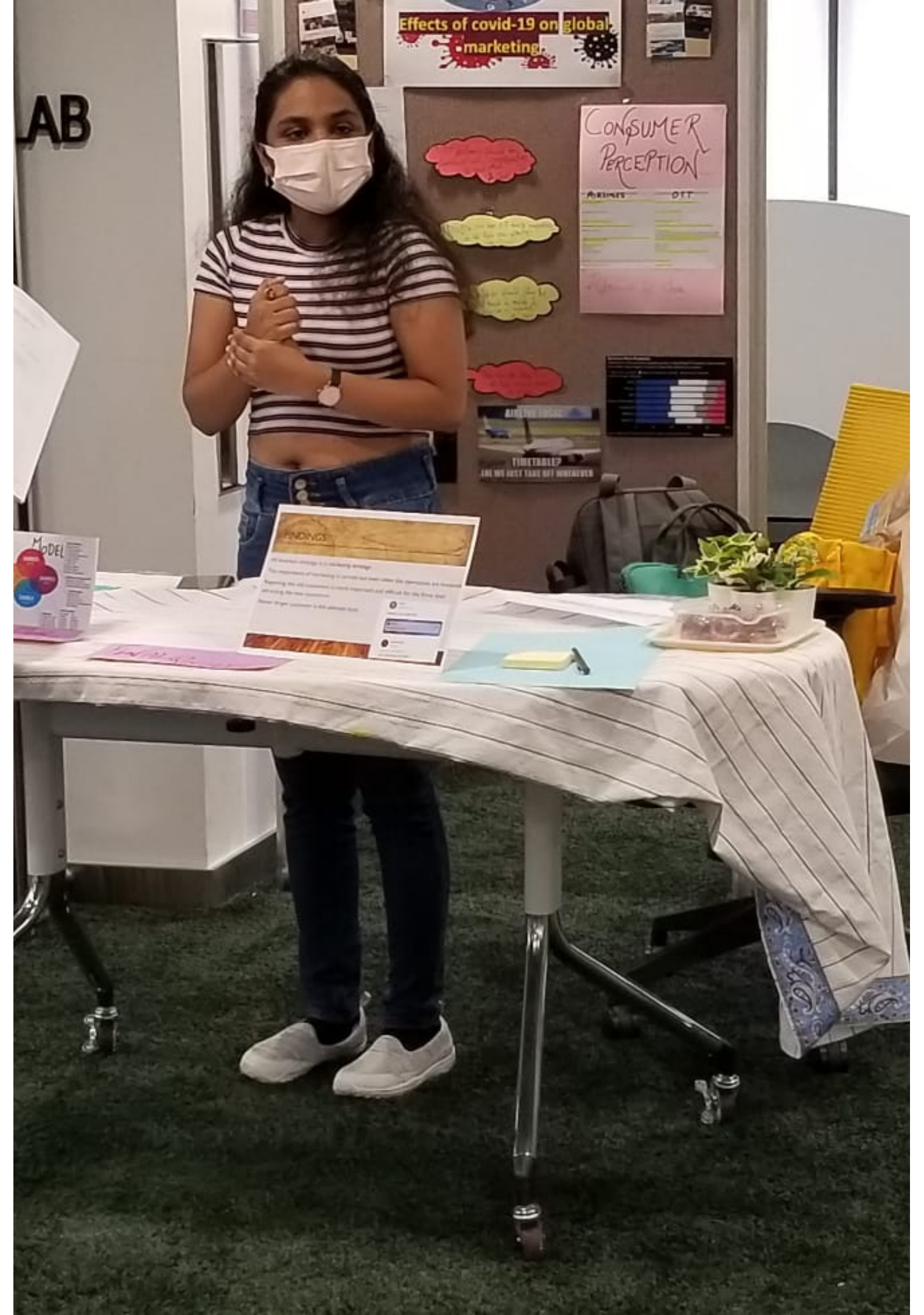
- Application must state clearly why research is transdisciplinary/ interdisciplinary and relate to SDGs.
- Different types of research methodologies (eg. artistic, market, humanities, engineering).
- Travel funding must be directly related to undertaking the research project.
- Students must submit deliverables (report, article) and present their findings.





# Notes on Funding

- Purchase of equipment allowed but require special approval and equipment may be retained by Common Core Office after the project.
- Funding CANNOT be used to directly pay students; rewards including participants recruitment; journal publication or conference fees.





# Examples of Funded Projects



**How do urbanization and environment change affect each other?**



**From the “leap of faith” to contemplation: the highest form of human intellectual and religious life**



**From Real to Reel: Making/Re-making Tin Shui Wai Using Participatory Video**



**Perceptions of Masculinity: The Effect of Podcasts (No funding required, just mentorship)**



# Important Dates

- Application should be submitted by students, with endorsement from faculty mentor
- Application Deadline: March 29, 2024
- Project Period: April 2024 – December 2024



# Transdisciplinary Experiential Learning Fund

- Supported by HKU's Gallant Ho Experiential Learning Fund but easier to application and reporting process.
- Any experiential learning activities or projects for undergraduate students.
- Anything from a short workshop (2 hours) to longer project (semester long)





## Who can apply?

- For HKU undergraduate students individually or in teams.
- Any HKU teachers/tutors running experiential projects or activities for HKU undergraduate students.





# Why do I want to get involved?

- Supplement the learning experience of students in your Common Core courses.
- Experiment with out-of-classroom experiential pedagogies.
- Flexible funding
- Accept submission all year round and quick approval (~ 2 weeks)
- Chance to revise your application after initial submission.





# Important Considerations

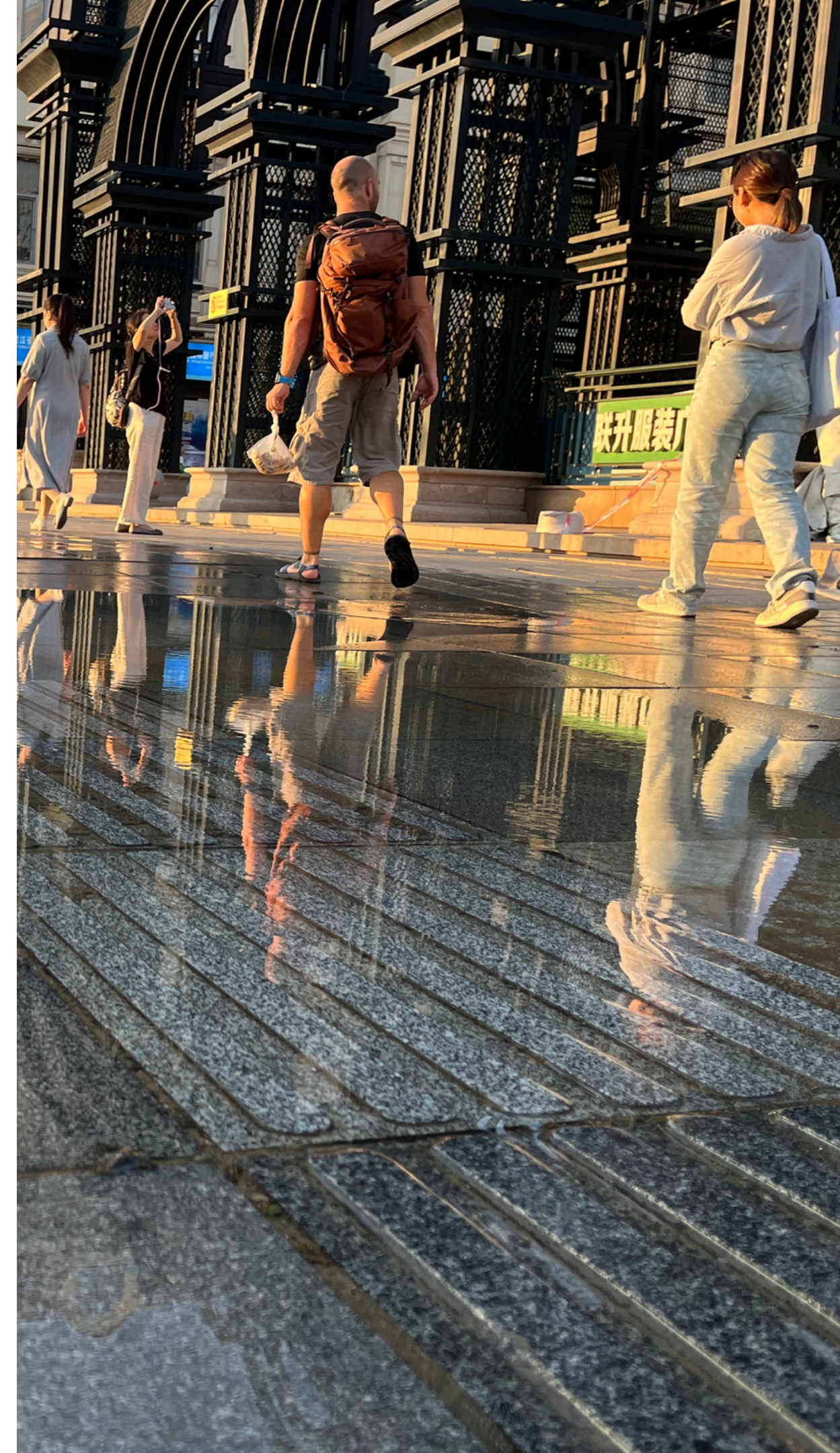
- Must be experiential (learning by doing) and should have student reflections.
- Must be interdisciplinary or transdisciplinary (connects or partners with community; directly related to SDGs).
- State clearly how the project's learning outcomes aligns with UEAs.
- Should not be internships, practicum, or placements in faculty professional programmes or overlap with existing service learning.





# Notes on Funding

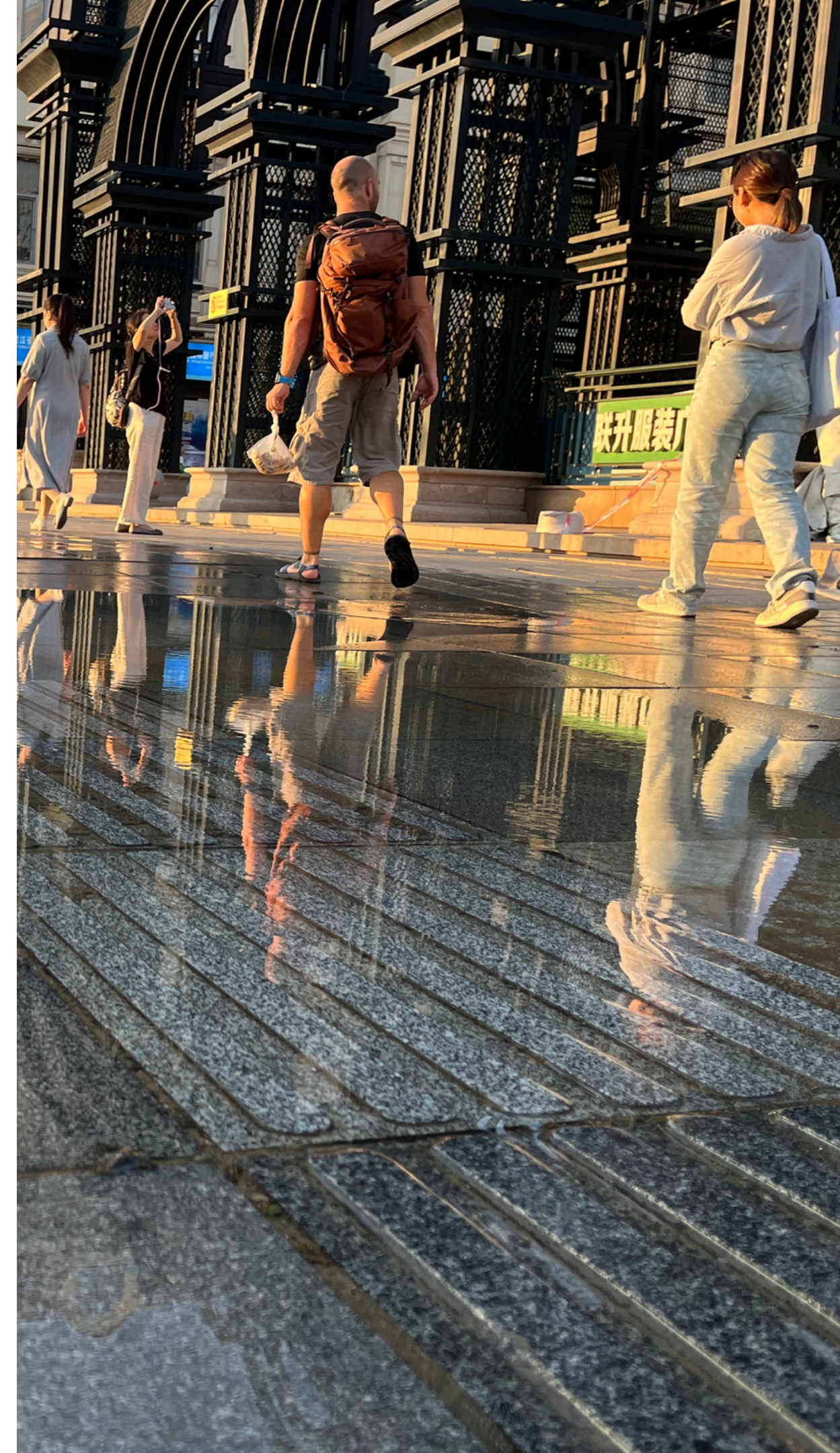
- Can be used to pay for expenses related directly to the experiential activity. Example: facilitators/ guides, honorariums or modest gift for speakers, venue or equipment hire, admission or tickets.
- Funding CANNOT be used to directly pay students; journal publication or conference fees.
- Consumables (food and drinks) generally not allowed if project is local but depends on circumstances.
- Adhere to policy for Gallant Ho Experiential Learning Fund





# Examples of Potential Projects Supported

- Partnerships with community/ NGOs for social impact.
- Students-as-partners or student-led events/ projects.
- Mainland-based activities strongly supported.
- Creative performances and exhibitions.
- Design/maker activities
- Series of experiential workshops or fieldtrips with guest facilitators/ guides
- Innovative in ideas/ concepts, instructional/ curriculum design, methodology, or use technology encouraged.





# Examples of Funded Projects



**Meaning of Life in the face of Death**



**International Yoga Day**



**Heartline HK Summer Mental Health Fair**



**24 Frames: A Student Short Film Show**



# Examples of Funded Projects

- Sustainable Aquaculture: Guided tours and workshops around Oyster production
- Inter-Island Festival: Experimenting with making sound installations
- Service trips to rural villages in Philippines





# Questions?



Feel free to reach out to me:

**Dr Jack Tsao**  
**Common Core Office**  
**Room 139, 1/F Main Building**  
**[jtsao@hku.hk](mailto:jtsao@hku.hk)**