



# **Sem2 New CC CCGL9081 One Planet, One Health**

---

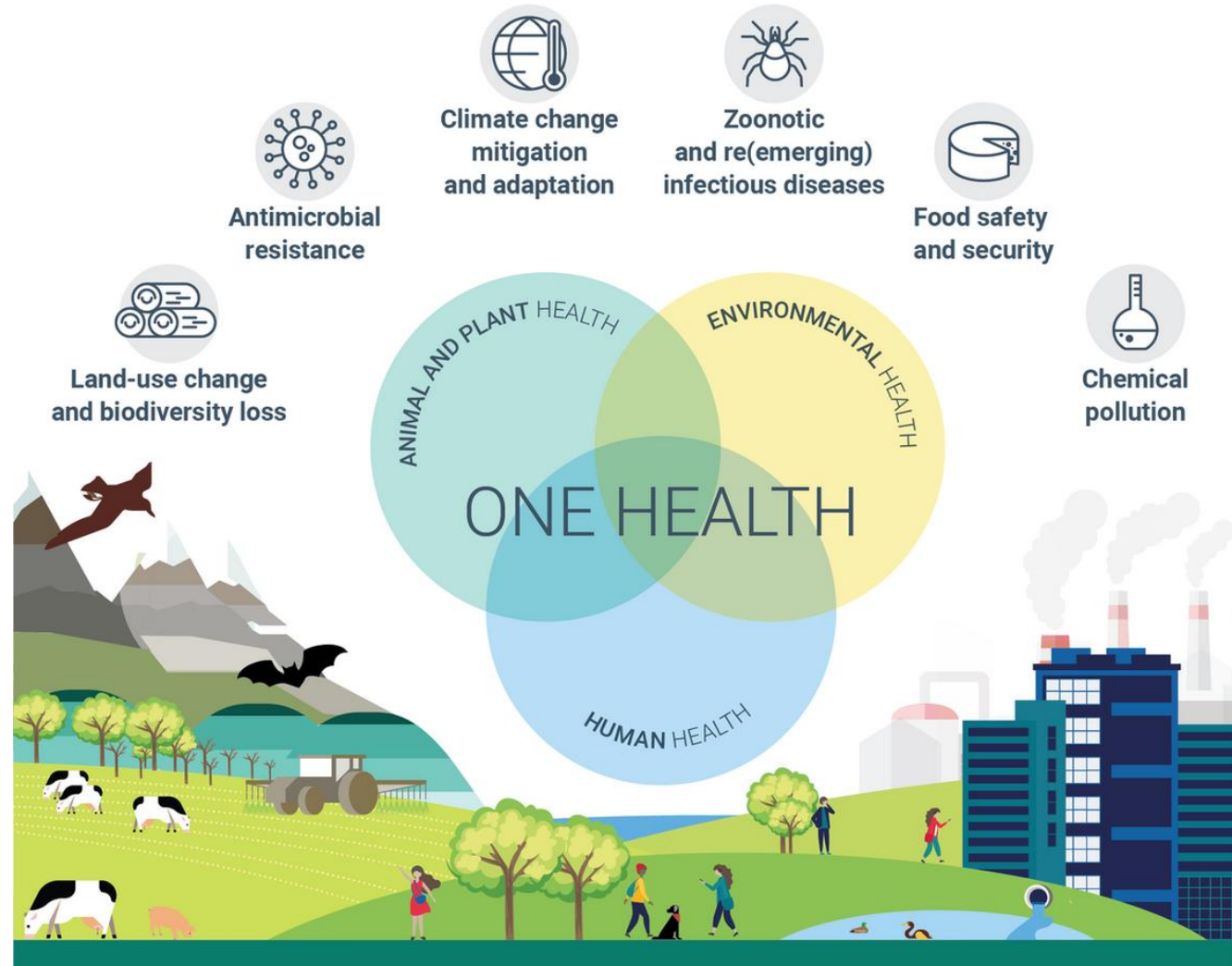
**Course Introduction**



# “One Health”- emerging & hot global issue

Rabies, Covid-19, SARS, Plague, Yellow fever, Monkeypox, MERS, Mad cow disease ...

- OH is an **integrated** approach aiming to optimize the health of people, animals, and ecosystems sustainably.
- Recognizes the **interconnectedness** of human, animal, plant, and environmental health.
- **Collaboration** across **multidisciplinary** sectors addresses health challenges like infectious diseases, antimicrobial resistance, and food safety, while safeguarding ecosystems.
- By linking humans, animals, and the environment, One Health covers disease control from prevention to response, enhancing global health security.
- Applicable at various levels, **from community to global**, requiring effective governance, communication, and collaboration.
- Facilitates **holistic** understanding of co-benefits, risks, and opportunities for comprehensive and equitable solutions.



# Assessment & Workload

- **No Exam**
- **No Mid Term Test**
- **Case Study Discussion + short Presentation**
- **Group one page poster + short Presentation**
- **Attendance & Class Participation**
- **Optional Field Trips**

CCGL New Course  
Still have seats!

# What can you benefit from this Course?

1. Equip YOU as a **global leader** with a multi-dimensional perspective on One Health Initiative
2. **Expand your career opportunities** in fields related to public health, veterinary medicine, environmental science, research, the global food industry and more.
3. Contribute to global health initiatives and make a **positive impact** on society.

[https://www.who.int/health-topics/one-health#tab=tab\\_1](https://www.who.int/health-topics/one-health#tab=tab_1)



# From theory to reality

★ CEO of a HK seed company (since 1929)

🗣️ integrate OH principles into agricultural practices for improved crop production, food safety and disease management

★ Mr. Lee & Oyster Hatchery Technical Director of Lee Kum Kee Food Limited (since 1888)

🗣️ How do a World Top 500 company implement the OH approach in their sauce production, and implement a sustainable and responsible industry to the environment

★ TO in CityU Vet School. Former Fisheries TO in AFCD, HKSAR

🗣️ Aquatic Animal Health: Enhancing Biosecurity and Disease Management and Seafood safety

★ Clinical Microbiologist at HK Hospital

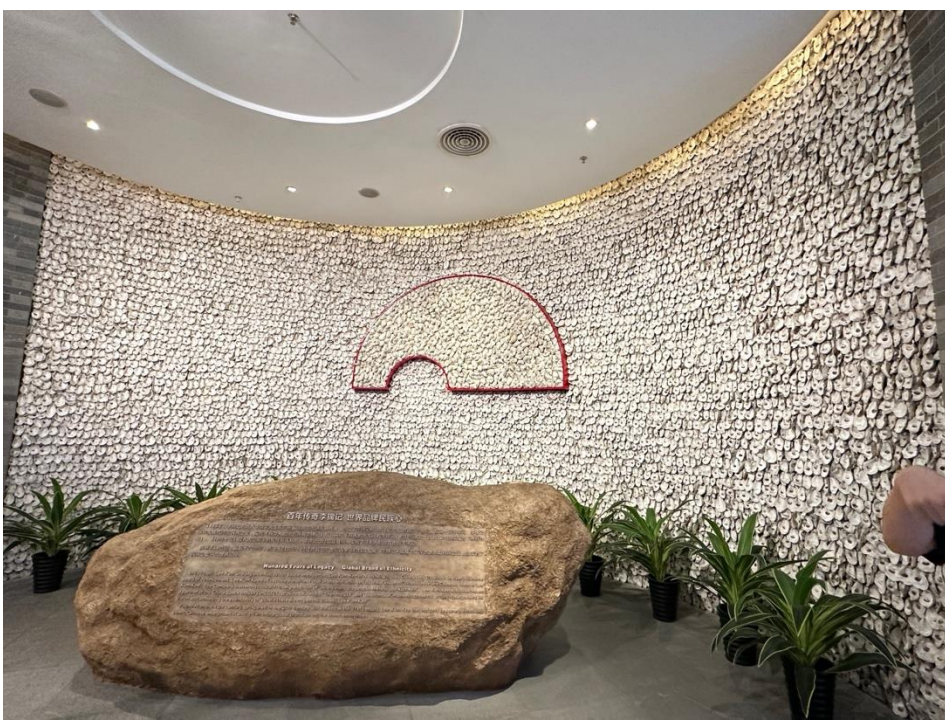
🗣️ The history and current approach of how OH can effectively combat infectious diseases. Show hospital real-life cases and disease management.

★ Registered Veterinary Surgeon. HKU graduate!

🗣️ Zoonotic diseases & Animal therapy in Vet perspective

★ Conservation Manager in a global environmental NGO (since 1951)  
🗣️ restoration, and “healing” our planet for the benefit of mankind

# 3 Days Study Tour in Mar 2025 (Optional) Exclusive trip to LKK oyster hatchery, food safety QC lab, production line, Wastewater to Mudflat ecosystem...



## Field Trip in HK (Optional)

★ HKU Oyster Hatchery and Innovation Research Unit

★ Pak Nai

- Mudflat ecology x Traditional Oyster culture

★ Exclusive Lau Fau Shan Tour

- Harvest your own oyster

- Farm to Table!

- Boat ride to see oyster raft

- Learn the traditional Chinese oyster shucking method

- A discussion session with local oyster growers

<https://www.discoverhongkong.com/uk/explore/great-outdoor/lau-fau-shan-oyster.html>



HONG KONG  
TOURISM BOARD

WHAT'S NEW

EXPLORE

PLAN

DEALS

Language

I am a visit

# Lau Fau Shan oyster: the living tradition of oyster farming in Hong Kong

MorningStudio Written by South China Morning Post (Morning Studio)

